



Belsize Crescent NW3

Parkheath  
*Sold on Service*





## Belsize Crescent, NW3 Asking Price £1,100,000 Leasehold

- A gorgeous 2 double bedroom, 2 bathroom apartment
- Elegant and handsome period conversion
- High ceilings, feature fireplaces and sash windows
- Excellent decorative order
- Entire first floor 972 sq ft approx
- Impressive 17ft reception and separate 20ft contemporary kitchen
- Both double bedrooms have built in wardrobes plus 1 bathroom and 1 shower room
- 150 years from 2000
- Wonderfully located in the heart of Belsize Village
- Ideally positioned for Belsize Park, Hampstead and Swiss Cottage

Belsize Park/Hampstead  
208 Haverstock Hill  
NW3 2AG  
Sales 020 7431 1234  
Lettings 020 7431 3104  
[nw3@parkheath.com](mailto:nw3@parkheath.com)

South/West Hampstead  
192 West End Lane  
NW6 1SG  
Sales & Lettings  
Tel 020 7794 7111  
[192@parkheath.com](mailto:192@parkheath.com)

Kensal Rise  
54-56 Chamberlayne Rd  
NW10 3JH  
Tel 020 8960 4845  
[kensal@parkheath.com](mailto:kensal@parkheath.com)

Property Management  
192 West End Lane  
NW6 1SG  
020 7433 6174  
[pm@parkheath.com](mailto:pm@parkheath.com)

**Parkheath**  
*Sold on Service*

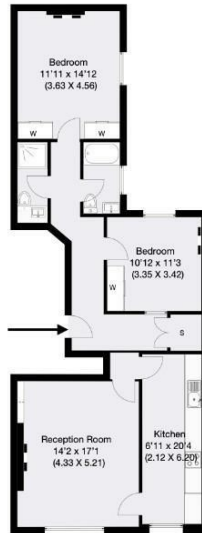
**Camden Tax band F**

[www.parkheath.com](http://www.parkheath.com)



**Belsize Crescent Belsize Park, London, NW3**

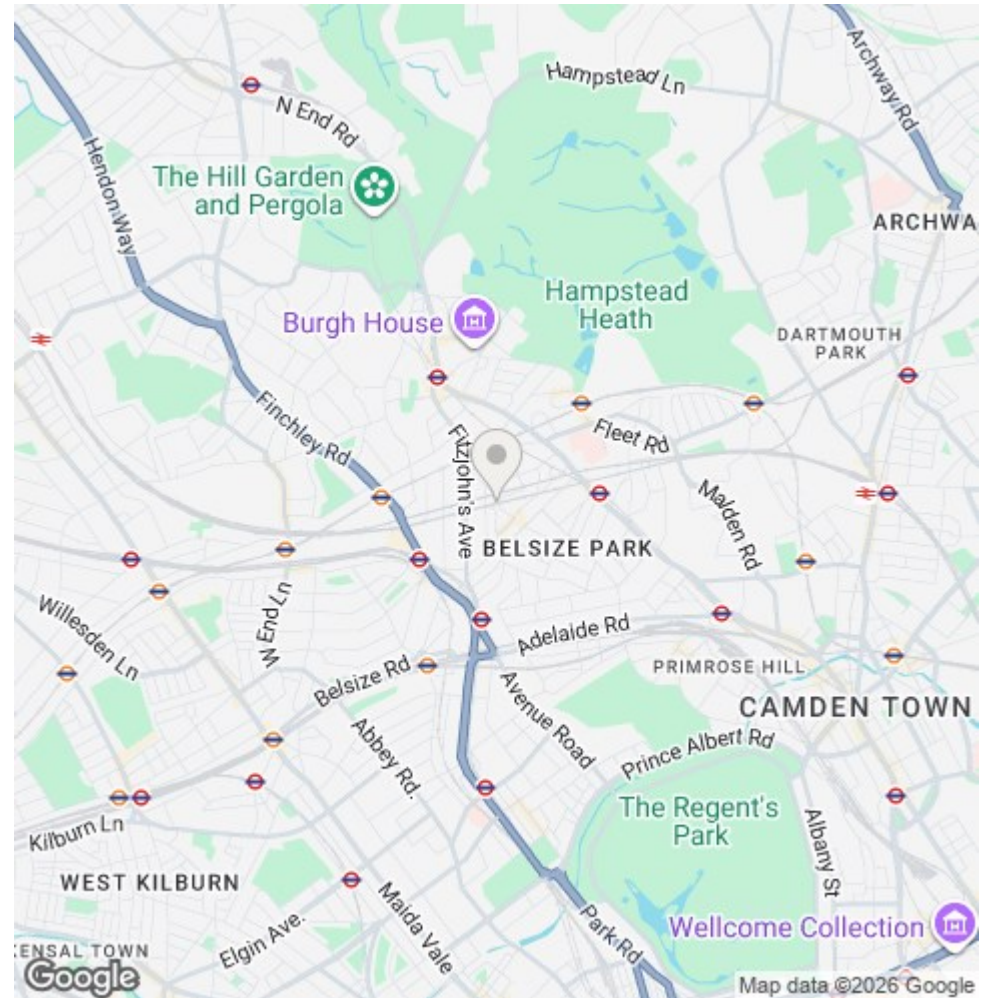
Approximate Gross Internal Area 90.3 sqm / 972 sqft



First Floor

THIS FLOOR PLAN IS PRODUCED FOR PARKHEATH SUBMITTED BY ARCHIMEDIA web: www.archi-media.co.uk

Whilst every attempt has been made to ensure the accuracy of the floor plan contained herein, measurements of doors, windows and rooms are approximate and no responsibility is taken for any error, omission or misstatement. These plans are for representative purposes only and should be used as such by any prospective buyer or tenant. Specifically no guarantee is given on the gross internal floor area of the property if quoted on this plan and any figures given in initial guidance only and should be treated as such.



The particulars do not constitute part of an offer or contract. The particulars, including text, photographs and plans, are for the guidance only of prospective purchasers/tenants and must not be relied upon as statements of fact. The descriptions provided therein represent the opinion of the author and whilst given in good faith should not be construed as statements of fact. Nothing in these particulars shall be deemed a statement that the property is in good condition or otherwise or that any services or facilities are in good working order. All measurements are approximate